



# LYNCHBURG GE NEWS

PUBLISHED BY EMPLOYEE AND COMMUNITY RELATIONS (EXT. 710) LYNCHBURG, VIRGINIA

VOLUME 11 NUMBER 159

FRIDAY, AUGUST 29, 1969

## Company-Wide Concern Expressed for Disaster Victims on Gulf Coast and Here in Virginia

General Electric employees from throughout the United States have been expressing concern about the plight of hurricane and flood victims on the Gulf Coast and in Virginia, according to a telegram received here from GE headquarters in New York.

The message stated that as soon as the news reached Company locations in New York and Pennsylvania, for example, employees had begun to form committees to assist their fellow employees down South, and by last Sunday (Aug. 24) a truck load of medical supplies, food and clothing donated by GE people in Philadelphia had arrived for use by GE employees at Bay St. Louis, Mississippi.

GE operates the Management Technical Services Department at Bay St. Louis, and its 1200 employees lived there and at Past Christian and Gulfport.

An estimated 130 employee homes in the Bay St. Louis area suffered either total destruction or major damage.

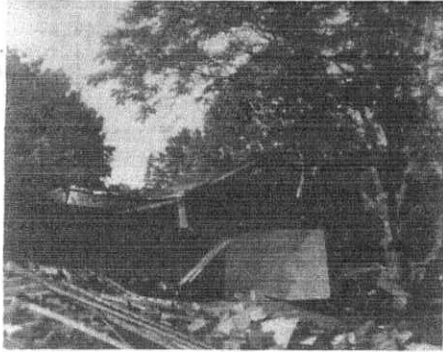
Among the homeless is John R. Picard, MSTD General Manager. When Camille had moved on, he took personal charge of the clean-up crews supporting the NASA effort to clear highways.

This week Picard had high praise for all members of his organization. He cited those employees who worked around the clock both at the plant and in adjacent communities. Many, he said, drove themselves beyond the limit of endurance, trying to bring order out of confusion, and by pitching in to render all possible aid to those less fortunate than themselves.

And, he said, he knew of numerous cases where GE people had performed acts of heroism, risking their lives in the flood waters to rescue other employees or neighbors. He told of one employee, Dave Wieting, who held two elderly people above water for five hours during the peak storm and the flood that followed.

There were many other examples of

(See COMPANY-WIDE CONCERN.....P.2)



REMNANTS OF A PACKING HOUSE swept across the highway at Massie's Mill.



HELICOPTER AND RUBBLE near the Command Post at Lovington, Virginia.

## Gerry Kiouss To Head Newly-Created Data Communication Engineering Sub-Section

Creation of a new Data Communication Engineering Sub-Section, and the naming of Gerry Kiouss as its Manager, is being announced today by CPD Engineering Manager Dave Pinkerton.

The new subsection will come into being September 1, and its purpose is "to concentrate in one area the data communication engineering activities of the Telecommunication Products Department," according to Dave.

(As announced previously, CPD becomes TPD September 1, and on the same date Dave Pinkerton becomes Manager of the Power Line Carrier Operation as well as continuing to serve as Acting Manager of Engineering for TPD.)

Gerry, who has been Manager of Application Engineering for the past year, will continue to serve in this

Gerry says that the newly-created sub-section will work closely with the Data Products Marketing group under Wayne Evans and a similar group in manufacturing "to enable the Department to participate more heavily in the growing data communication business."

A native of South Mound, Kansas, Gerry holds the BSEE degree in electrical engineering from the University of Michigan.

Joining GE in 1948, Gerry held assignments in Fort Wayne, Indiana, and Syracuse, N.Y., before moving to Lynchburg in 1959 when CPD was moved here.

He has held varied engineering assignments with the Company, including project leader on several communication projects, as well as Manager, Military Equipment Engineer-



ing and Manager-Transmission Systems and Equipment Engineering.

Gerry is a Registered Professional Engineer in the state of Virginia and is a member of the IEEE.

GE Stock closed at 83 3/4.

courage and endurance and unusual performance.

"After the storm," Picard noted that, "many of our people performed, and are continuing to perform such tasks as searching for bodies, manning communication posts, driving ambulances and emergency vehicles, or dispensing food."

The trustees of the Company's Emergency Aid Plan were quick to respond to the needs of GE people in the disaster areas. E. S. Willis, Manager-Employee Benefits, has notified all Employee Relations Managers that the trustees have approved a change in the Plan expressly for this disaster case.

The change permits loans and grants to hourly and non-exempt employees to exceed the former \$500 limit, each going up to \$1,500, for a total of \$3,000. Service requirements are reduced from one year to 30 days. At MSTD applications for loans and grants are getting rapid processing.

Additionally, the Company is also attempting to provide such differing services as emergency legal counseling and advice and the renovation of electrical appliances damaged by the storm.

Medical Systems Department, Milwaukee, has donated for use throughout the emergency, a battery-powered mobile X-ray unit. It was airlifted last week to Hancock County Hospital, Bay St. Anne, Mississippi.

Mississippi GE management also worked closely with Jackson M. Balch, NASA's Mississippi Test facility manager, his deputy, Henry F. Auter, and with senior officials of the Boeing Company and North American Rockwell Corporation in coordinating relief efforts at the test facility and in the Gulf area.

Joint task forces were established to supervise housing, community support, employee aid and site restoration.

The Company-wide roundup of activity and concern about the recent disaster states that assistance plans are under consideration at Company headquarters to meet pressing problems of employees affected by the flood conditions.

The word from Bay St. Louis--like the Nelson County area here--is that food and clothing are not needed at present. Supplies from the Red Cross and from Federal agencies have arrived in abundance, according to the report and, for the time being at least, storage and cataloging are the main efforts.

But, for the future, it will be a long, hard pull as families get rehabilitated. They'll keep on needing the concern and assistance of all of us as we support the organized disaster relief efforts of our churches, civic clubs, and United Givers' Fund agencies in the months ahead.

ELECTRONICS I ALSO TO BE OFFERED...

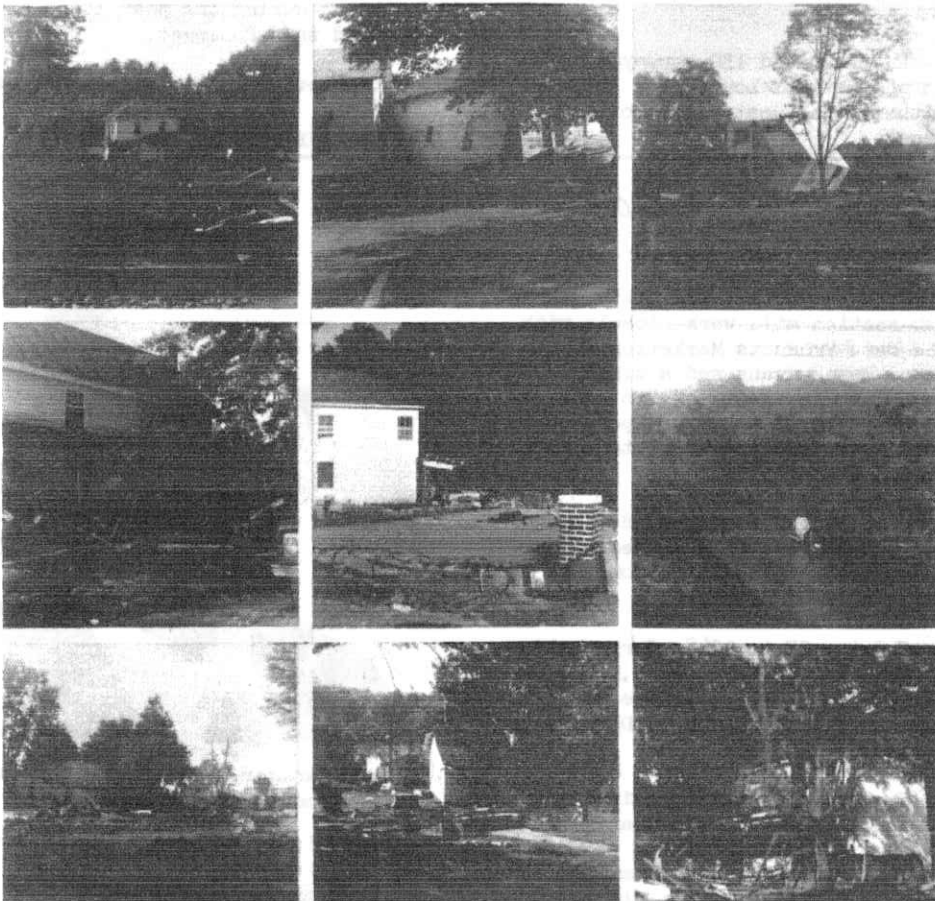
The Adult Education office of the Lynchburg Public Schools has announced that the Electronics I course will be offered this Fall. The course will be taught in the E. C. Glass shop on Monday, Tuesday, Wednesday

and Thursday nights from 6:30 p.m. to 10:30 p.m. Individuals interested may register now and through Sept. 5 from 8:30 a.m. daily and from 7:00 p.m. to 9:00 p.m. on all nights. Registration will take place in the School Administration Building, 11th and Court Streets, 845-6051.

FOURTH OF NINE PAID HOLIDAYS THIS YEAR IS COMING UP THIS MONDAY (LABOR DAY)

Just in case it's slipped anyone's mind, Monday is a paid holiday for GE employees--the fourth of nine this year--so this will be a long holiday weekend.

HERE ARE SOME PHOTOS MADE IN THE MASSIE'S MILL AREA BY MRD PRODUCT SERVICE REPRESENTATIVE DAN CHANDLER:



It's encouraging that we can look forward to five more days off with pay this year...and these days are "bunched" together at two popular holiday seasons: We'll be off Thursday through Sunday, November 27 through 30, for Thanksgiving...and Wednesday, December 24 through Sunday, December 28 for Christmas.

Have a nice weekend...and make sure you're back safe and sound Tuesday, September 2.

TRADING POST

For Sale: Dachshund puppies, 3 months old, black, 2 females. \$35/each. Call 384-1442.  
 ...'68 Honda, 350 model, \$374. Call 845-1493 after 5:00 p.m.  
 ...'68 Triumph motorcycle 250 cc, exc. cond. Call 847-4352 after 5:00 p.m.  
 ...Portable stereo with speakers. \$40. Call 239-7218 after 5:00 p.m.  
 ...Camping trailer. Reasonable. Call Brookneal, Va., 376-2524.  
 ...'67 Mustang V8, Auto., power steering. \$1500. Call 239-9822.  
 ...'62 Ford Galaxie, straight shift, new tires, 28,000 mi. \$550. Call VI 6-2965 after 6:00 p.m.  
 ...'66 Ford pickup, 48,000 mi., exc. tires & mech. cond. \$995. Call 846-8883 after 4:30 p.m.  
 ...'65 Chev. Impala conv., 327, st. drive, exc. cond. Must sell, going back to school. Call 239-4538.