



LYNCHBURG GE NEWS

PUBLISHED BY COMMUNICATION PROGRAMS OFFICE (EXT. 2511/2710) LYNCHBURG, VA

AN EQUAL OPPORTUNITY EMPLOYER

VOLUME 17 NUMBER 198

MONDAY, OCTOBER 27, 1975

Ed Kenefake's Retirement Caps a GE Career Spanning Nearly Four Decades

"Throughout my career, I've always been impressed with the quality of the people who work at GE," says Ed Kenefake who'll be retiring at the end of this month after nearly forty years with the company. "General Electric has always recruited and trained good people."

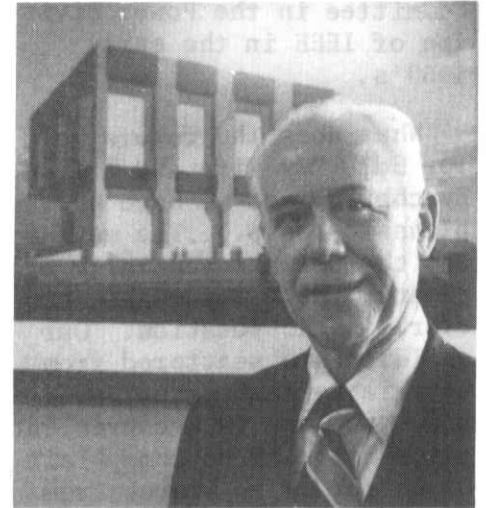
Ed, who's had a lot of contact with our customers as manager of power line carrier marketing since 1957, says that these customers echo his conviction that we are noted for the people who work here.

"But," says Ed, "you have to have quality of products as your cornerstone. We have been blessed by having not only good people but also top quality products and services. All of this taken together has been the real key to power line carrier's success."

Now, as he's preparing to enter retirement, Ed says he's especially appreciative of the company's Pension Plan, and the benefits he'll be enjoying during retirement. "Sometimes you don't think about this too much until you get ready to retire," says Ed. "But when this happens you really come to look at all aspects critically... and I'm extremely happy that the GE retirement program is such a good one."

Ed joined GE in Schenectady in 1936 on the Engineering Test Program, after earning the BS degree in electrical engineering and the MS degree in physics from Notre Dame.

Ed held rotating assignments in the company's 3-year advanced engineering course and this involved work with radio transmitters,



ED KENEFAKE, entering retirement after nearly forty years with GE, stands in front of the architect's drawing of the Power Line Carrier Test Facility dedicated in 1973. Ed helped get approval for construction of the facility and quarterbacked the dedication ceremonies.

receivers, and vacuum tubes before he assumed duties as an engineer on carrier current equipment in August 1938. From 1945 to 1950 he served as manager of engineering for the power line carrier business.

Ed holds a number of patents, including the basic patent for narrow band FM-- now expired. He moved into the sales field in 1950, and served as manager of microwave sales. Then, in 1957, he became manager of power line carrier marketing.

Ed's associates agree that he deserves a considerable

See ED KENEFAKE, page 2

* DC TO AC TO DC--A PARADOX! *
* *
* *Thinking back to his graduate school days at Notre* *
* *Dame, Ed came up with an interesting paradox:* *
* *
* *His master's degree work involved helping to build a* *
* *one million volt DC generator. Then, in recent years, he* *
* *helped get approval for, and quarterbacked the dedica-* *
* *tion of, a one million volt AC test facility here at* *
* *Lynchburg GE.* *
* *
* *"Now," says Ed, "the industry is going back to DC...* *
* *and power line carrier's recent Zaire contract involves* *
* *DC power....So, we've come 'full circle' during my GE* *
* *career!"* *
* *****

ED KENEFAKE (continued)

amount of credit for the growth of the power line carrier business since that time. Also, he's received industry-wide recognition for his contributions to the business; he served as chairman of the Power Systems Communication Committee in the Power Division of IEEE in the early 1960's.

What does the future hold for Ed? "My wife and I like Lynchburg, and we have no plans to leave...The weather and the climate generally are great...Most important, however, is the location. Our children are scattered from Georgia to Washington, D.C., and Lynchburg is a convenient place for them to come visit us or for us to travel from in order to visit them."

ANOTHER PARADOX: MRPD!

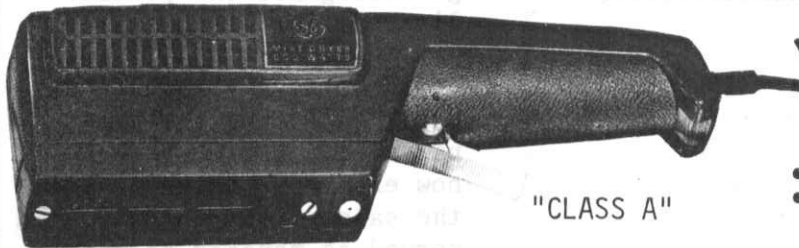
Another of the interesting paradoxes in Ed Kenefake's life story is the fact that, just this year--a couple of months ago--GE's power line carrier operation was transferred to the Mobile Radio Products Department which has seen such impressive growth in recent years.

"Back in the early 40's," Ed reminisces, "when I was serving as section engineer for power line carrier... and we were located at what was more or less a satellite plant in Schenectady....I received a call from GE's Bridgeport, Connecticut plant.

"I was asked if I could make space in my area for about three people, and I was glad to do so. The three people were Lacey Goosetree, his secretary, Alice Drew, and one other person...and those three people were the nucleus of what was to eventually become General Electric's Mobile Radio Products Department!"

"After providing the space many years ago, for what was MRPD's very beginning, I'm now back in MRPD, a world-wide business employing many hundreds of people!"

TEN-YEAR VETERANS Laura Gowen (second at left) and Louise Hutchinson (second from right) accepted congratulations and service awards from their managers Chuck Radford (first at left) and John Rhodenhizer (at far right), while Data Processing Manager George Goodwin, presented a 10-year award to Francis Banks, supervisor of data processing on the second shift.



NEW
Mist Styling Dryer
Model SD-3

- 600 watts of drying power.
- Spray mist styling system moistens hair for better styling control between washings.
- Styling brush and 2 comb attachments.
- Adjustable heat and airflow for better styling and drying control.
- Protective screen in air intake, exit grilles.



THE SD-3 MIST STYLING DRYER--GREAT AS A GIFT AND GREATER FOR YOUR OWN PERSONAL USE.

\$13.25

CLOSED MONDAY

GET IT TOMORROW! 11 - 1 and 2 - 5 P.M.