

C. P. D. NEWS

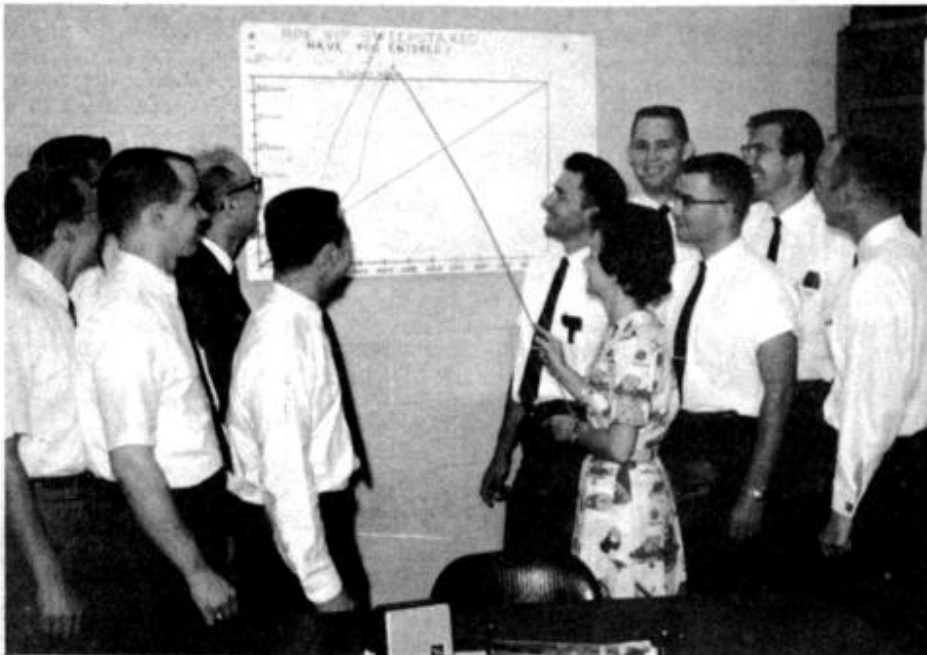


PUBLISHED BY EMPLOYEE AND COMMUNITY RELATIONS [EXT-710] FOR ALL LYNCHBURG GENERAL ELECTRIC EMPLOYEES

VOLUME 7 NUMBER 126

LYNCHBURG, VIRGINIA

TUESDAY JUNE 29, 1965



"YOU'RE OVER THE TOP ON VIP'S...before the year is half out," says Secretary Mary Goff...as she plots approved savings, and points to the successful results, with Mobile Product Production Engineering men standing around: *Left to right* are Bob Woods, John Bavely, Olin Giles, Manager Frank Hannell, Art Douglas, Gene Brauner, Mary Goff, D. C. Hughes, Jim Sears, VIP Captain Gerry Haskins and Bill Blackburn.

A GOOD HABIT TO GET INTO...

With Mobile Product Production Engineering people, saving money is a regular thing: it's their job...and it's a regular habit with the organization, says Manager Frank Hannell. So much so, in fact, that the unit's VIP record played a role in the promotion of Team Captain Gerry Haskins.

IT HAPPENED THIS WAY: SEVERAL MONTHS AGO, HASKINS WAS CALLED FOR AN INTERVIEW TO GE'S OUTDOOR LIGHTING DEPARTMENT, HENDERSONVILLE, N.C. JOKINGLY, PPE MANAGER HANNELL TOLD GERRY, "YOU CAN'T GO ON TO A BETTER JOB UNTIL YOU LEAD US OVER THE VIP GOAL FOR 1965."

Gerry must have taken the challenge to heart. When he leaves tomorrow, he and his team members will have gone over the year's target, in less than half the scheduled time.

GERRY SAYS THAT HIS VIP RECORD AND HIS COST CONSCIOUSNESS WERE DEFINITE FACTORS IN HELPING HIM LAND THE BIGGER JOB...AS SENIOR METHODS AND
(See GOING OVER BUDGET, ON VIP'S, p.2)

EMPLOYEE STORE OPEN TODAY...

The Employee Store will welcome shoppers today during lunch periods; and in the afternoon from 3:30 - 4:45 p.m. You'll find a convenient array of top-quality products, at savings for you and your family. See the Store ad... Page 2.

In the Parking Lot

NEEDED: YOUR CONTINUED COOPERATION

Things ran pretty smoothly in General Electric's big parking lot in a change-over at the Mountain View Road Plant yesterday and today, according to a report from Burns Guard Captain Nelson Carroll. The guard force, he said, will continue to be on hand to help guide employees for the balance of the week.

CAPT. CARROLL SAYS THAT IN HIS OPINION THE NEW PARKING ARRANGEMENTS PROVIDE THE FAIREST APPROACH FOR EMPLOYEES OF ALL SHIFTS...SINCE THE BUILD-UP OF SECOND SHIFT OPERATIONS, EMPLOYEE COOPERATION IS ASKED TO HELP MAKE PARKING SAFE, CONVENIENT AND FAIR FOR ALL.

GARBER SPEAKS HERE TONIGHT ON FLIGHT

Tonight, when members of the Association of Lynchburg General Electric Engineers (ALGEE) and their guests hear a talk by Paul Edward Garber... they'll learn of an avocation which was transformed into a vocation... dating back when the speaker saw Orville Wright fly at Fort Myer, Virginia in 1909.

Garber, Head Curator and Assistant Director of the Smithsonian Institution's National Air Museum, appears at the GE Employee Auditorium tonight at 8:00 p.m. The subject of his talk is "DaVinci to the Gemini."
(See ALGEE PROGRAM HERE TONIGHT...p.2)



ANOTHER COLLEGE EMPLOYEE ON BOARD...

The last of more than thirty college youngsters -- sons and daughters of employees here -- joins GE temporarily this week...as many permanent new people come on the payroll.

BONNIE GAIL EWERS, THE DAUGHTER OF RUBY EWERS, BEGINS WORK IN CARRIER CURRENT SALES...FOR THIS WEEK, AND STARTING NEXT WEEK WILL DO GENERAL OFFICE WORK, HELPING HANDLE ORDERS, IN OUR MARKETING ORDER SERVICE ORGANIZATION.

Bonnie is a student at Madison College.

ALL LYNCHBURG GE EMPLOYEES INTERESTED IN THE HISTORY OF FLIGHT ARE INVITED TO ATTEND THE MEETING. THERE IS NO ADMISSION CHARGE; BUT THOSE WISHING TO HEAR THE PRESENTATION SHOULD SIGN A GUEST ROSTER BEFORE 2:00 P.M. IN ROOM 1476 FOR THEMSELVES AND MEMBERS OF THEIR FAMILIES. ALGEE MEMBERS DO NOT NEED TO REGISTER FOR THEMSELVES OR FOR THEIR FAMILIES.

A MEMBER OF THE "EARLY BIRDS OF AVIATION, INC.," AND OTHER FLIGHT ORGANIZATIONS, THE SPEAKER HAD A SHORT FLIGHT AS A PASSENGER IN A CURTISS FLYING BOAT AS EARLY AS 1912. THE NEXT YEAR, HE FOUNDED AMONG HIS SCHOOL FRIENDS THE CAPITOL MODEL AEROPLANE CLUB WHICH HAD A LONG HISTORY IN STIMULATING THE BUILDING AND FLYING OF MODEL AIRPLANES. IN 1915, GARBER BUILT AND FLEW A BIPLANE GLIDER...AND HE RECEIVED INSTRUCTION IN POWERED FLIGHT WHEN HE SERVED DURING WORLD WAR I.

In 1918, after discharge from the Army, Garber joined the Postal Aviation Service, and helped provide the first governmental scheduled public air mail service in the world.

THE SPEAKER BEGAN HIS CAREER AT THE SMITHSONIAN IN 1920. FIRST HE WAS A "PREPARATOR" OF EXHIBITS...AND OVER THE YEARS HAS ADVANCED TO HIS POSITION AS HEAD CURATOR. HE HAS BEEN CLOSELY ASSOCIATED WITH THE ACCESSION OF THE MANY FAMOUS AIRCRAFT WHICH NOW COMPRISE THE NATIONAL COLLECTIONS.

The guest speaker is the author of several books and papers on the history of flight; and he has won a number of awards in his field.

AMONG SPECIAL VISITORS WHO WILL ATTEND THE LECTURE ARE EDWARD T. BEST, MANAGER-VIRGINIA DIVISION/PIEDMONT AVIATION; C.R. BLACKMON, LYNCHBURG STATION MANAGER, PIEDMONT AVIATION; W. CALVIN FALWELL, CHAIRMAN-AVIATION COMMITTEE, LYNCHBURG CHAMBER OF COMMERCE; WILLIAM C. FLANIK, FEDERAL AVIATION AGENCY AREA COORDINATOR; F. K. ROGERS, GENERAL MANAGER, HOLLADAY AVIATION; MAJ. THOMAS L. BUCKLEY, COMMANDING OFFICER, LYNCHBURG CIVIL AIR PATROL, AND OTHERS.

CONGRATULATIONS!

To Mr. & Mrs. Kenneth West on the birth of their daughter, Deborah Renee, June 22. Deborah checked in at 6 lbs. 1 oz. Ken works in Die Casting Secondary Operations.

And To Mr. and Mrs. Melvin Anderson on the birth of their daughter, Leslie Carol, June 23. Leslie weighed 6 lbs. 5 oz.; her Dad works in Mobile Equipment Engineering.



FOR SALE: Wooded lot on Mosley Dr., 150' frontage. Call 239-2253 after 5:00 p.m.
 ---1957 Chevy, \$550.00; Also, power saw, \$75.00. Call 239-5543.
 ---Plymouth (1958). First \$100 takes it -- exc. second car. Can be seen at Walker's Texaco, Wards Road.
 ---1956 Ford, 4-dr., fair condition. \$165. Call 239-0809.
 ---Two Siamese kittens (7 wks. old) -- male, \$15; female, \$10. Call Big Island, CY 9-5518.
 ---Rortiller in good cond., \$40.00; also, 2 gas range - good cond., \$40.00. Call 239-8636 after 5:00 p.m.
 ---1964 Mobile Home (52 X 10). Call 239-6603 after 5:00 p.m.
 ---Chev. ('57) 210 station wag. - rebuilt motor, new brake lin., battery & exhaust syst. Exc. body & tires. 6 cyl, std. shift. \$425.00. Call WY-3-2531.
LOST: Elgin watch one week ago. Call Vivian Mays, Ext. 468.

SYMPATHY TO ERNEST DUGGER FAMILY

Employees express sincere sympathy to Ernest Dugger and his family... on the death of four-year-old William David. Ernest's young son died last night following an accident Friday when he was struck by a car. The youngster reportedly had been to the mailbox on Route 738 (old 29 South) and had turned to recross the road, stepping in front of the auto traveling north. Campbell County Rescue Squad volunteers took the boy to Lynchburg General Hospital for treatment.

TOOLING SPECIALIST WITH OUTDOOR LIGHTING.

The good work of PPE men will continue in the months ahead...from here on out with the leadership of Jim Reed, a recent graduate who has joined the unit...as Mechanical Engineer...and is assuming responsibility for the VIP effort.

PPE'S ALREADY OVER-THE-TOP RECORD HAS BEEN ACHIEVED BY FULL PARTICIPATION IN THE PROGRAM. THIS INVOLVES MANY SMALL PROJECTS...AND A NUMBER IN CONJUNCTION WITH OTHER PEOPLE IN MARKETING, MANUFACTURING (ESPECIALLY PURCHASING) AND ENGINEERING.

Some of the larger projects include such items as ruggedized Message Mate reeds...suggested by Jim Sears; improved high-band noise blanker circuitry...planned by Olin Giles...and other cost reduction teamwork involving substitute components for MASTR, and changing of decals to the adhesive type.

NOT EVERYBODY CAN REACH HIS VIP GOAL BY MID-YEAR, AS PRODUCT PRODUCTION ENGINEERING PEOPLE HAVE DONE. BUT ALL EMPLOYEES -- NO MATTER WHAT THEIR JOBS -- CAN BECOME MORE COST CRITICAL... LOOKING FOR THAT ALWAYS POSSIBLE, better way.

TOMORROW'S MENU

- Roast round of beef, au jus.....45c
- Chuck wagon steak.....40c
- Western omelette.....35c



TOMORROW'S SPECIAL

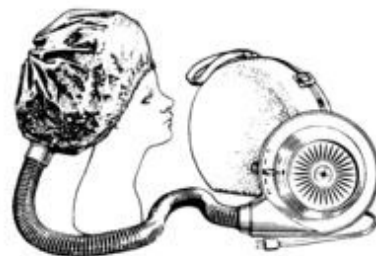
Baked ham on bun, lettuce & tom., peach half, 45c

GENERAL ELECTRIC STOCK closed yesterday at 91-1/2.



EVERYONE'S HURRYING OFF...to the Employee Store...to cash in on big savings.

WHAT THEY'RE AFTER...is this handsome Deluxe Hair Dryer (HD-2)... especially made for every girl who wants beautiful hair and convenience. Dryer lifts out of case, straps to waist for truly portable drying. You can walk, talk, and telephone!



- * Smart beige and white or pink and white dryer...in white case.
- * 72-air jets, providing heat or cool air (in summer) from Powerful, Quiet Motor.

Retails at \$29.95. Normal Store Price, \$21.45; now, only \$15.95!

At The Employee Store